

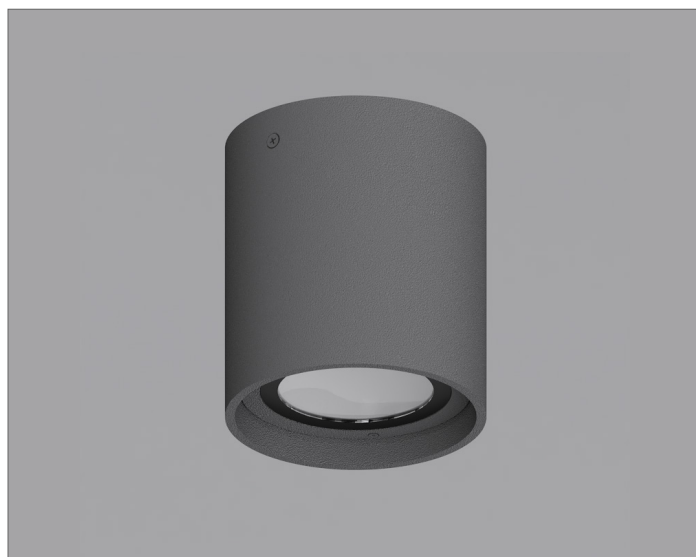
CELIA CR

Ceiling Mount Round Architectural Concrete Cylinder

FILE NAME:	CELIA CR
FAMILY CATEGORY:	Lighting Fixture
SOFTWARE:	Revit 2020
IES:	Available



4INCH



6INCH

PRE-LOADED TYPES:

Load CELIA CR

ADJUSTABLE PARAMETERS:

Size Options CELIA CR
4" and 6" aperture, Direct housing

Materials and Finishes Dark Gray / Silver Gray / Brick Red (custom)

IES File Used CEL-CR-4D General 30K 90CRI
CEL-CR-6D General 30K 90CRI